



Full Subject-Based Banding (FSBB)

Parents' Engagement for Secondary Two
Friday, 24 January 2025

Rationale of Full SBB

Full SBB aims for students to:



Have **greater ownership of their learning** according to their strengths, interests, abilities, talents and learning needs



Develop a **growth mindset and an intrinsic motivation** to learn for life



Have **more opportunities to interact with friends** of different backgrounds, strengths, interests, abilities and talents



Have **more options for post-secondary pathways**, while ensuring they have strong fundamentals and can thrive in their chosen pathway

What does Full SBB mean for my child? (Video)



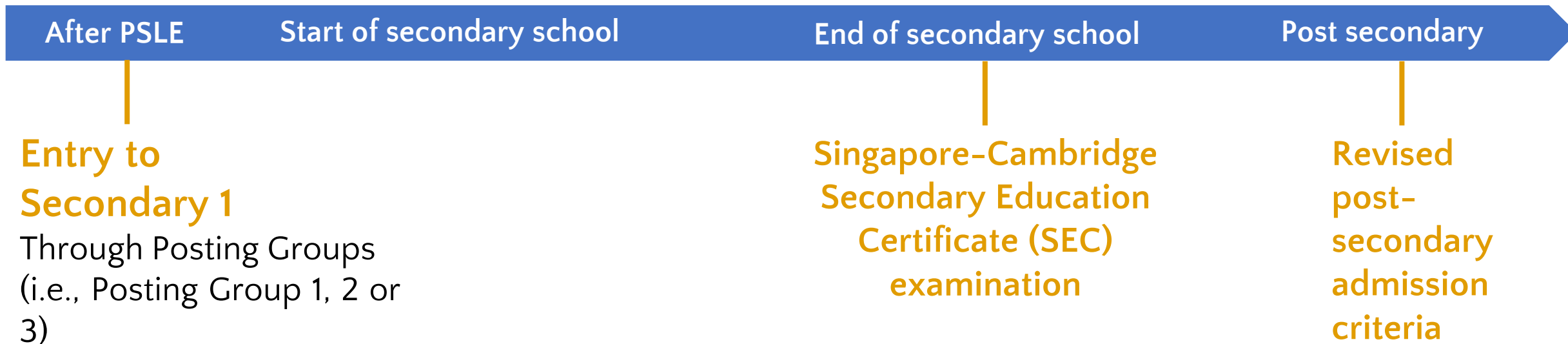
Full Subject-Based Banding



Secondary school experience under Full SBB

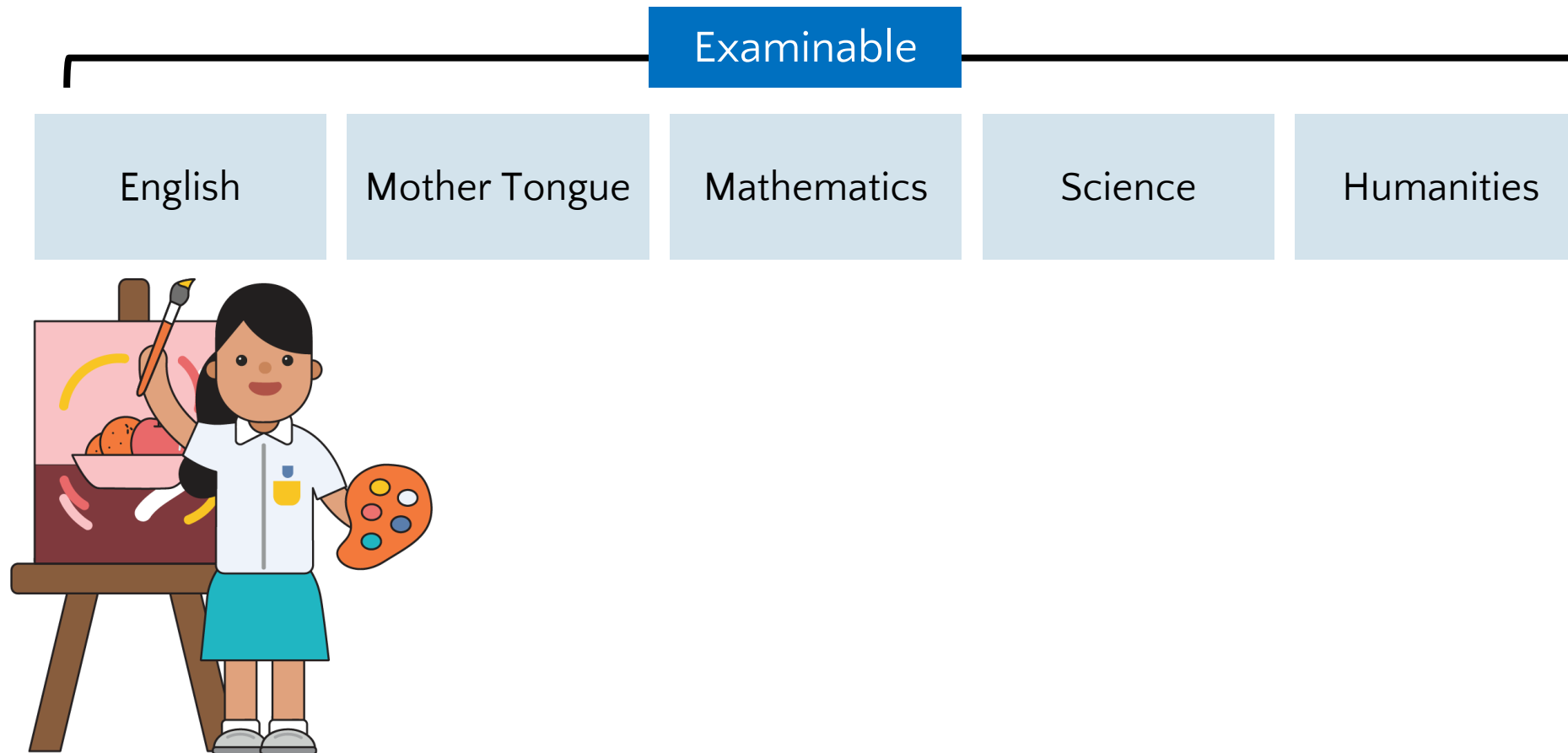
Secondary school experience

1. Mixed form classes upon entering secondary school
2. Common curriculum subjects at lower secondary
3. Subjects to be offered at G1, G2 or G3, mapped from the standards of the N(T), N(A) and Express respectively
4. Greater flexibility to offer subjects at various subject levels
5. Shift away from stream-based subject offerings



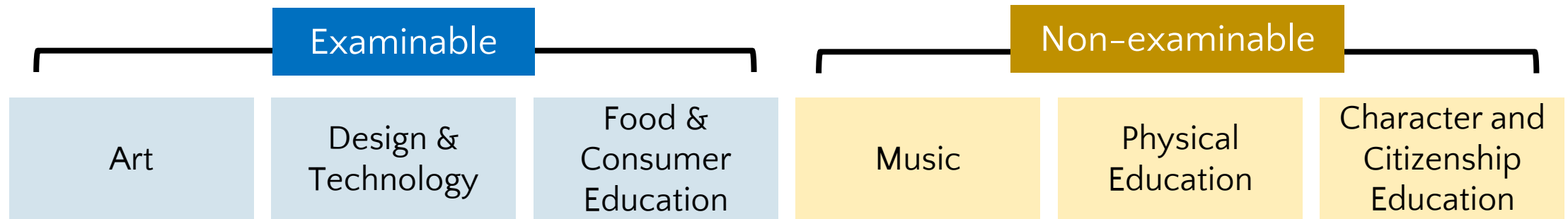
Core Curriculum Subjects

- Students will take five core curriculum subjects with their classmates:



Common Curriculum Subjects

- Students will take six common curriculum subjects with their form class classmates:



- These subjects take up approximately one-third of curriculum time, giving students time to interact with classmates of different strengths and interests.

In-School Progression

The changes are part of broader efforts by MOE to:

- allow students to have greater ownership of their learning according to their strengths, interests and learning needs, and
- encourage students to develop a growth mindset and an intrinsic motivation to learn for life.



In-School Progression



Sec 2 to Sec 3

- Under Full SBB, **all students will generally progress to the next year of learning**, guided by a **common academic requirement** that applies at the end of **Secondary 2 and Secondary 3**.

Academic requirement:

Pass (a) EL and 2 subjects *or* (b) at least half the total number of examinable subjects offered.

What's next?



Secondary 1 & 2

End of Secondary 2

Secondary 3 & 4

Deciding on upper secondary subject combinations

All students will offer between 5 and 9 examinable subjects for upper secondary.

Upper secondary

Students will continue to have flexibility to offer subjects at different subject levels, including elective subjects.

What's next?

End of Secondary 4/5

Singapore-Cambridge Secondary Education Certificate (SEC) Examination

From 2027, students will sit for the new SEC examinations, with different papers for each subject level.

5th year of secondary education will continue to be available for eligible students.

- This allows them to pace their learning and possibly offer subjects at a more demanding level to access more post-secondary pathways.

Post-Secondary

Admission to post-secondary education institutes

Admission criteria have been progressively updated to recognise students taking different combinations of subjects and subject levels.

- E.g., Polytechnic Foundation Programme (PFP) has been expanded to allow access to students offering G3 subjects, or a mix of G2 and G3 subjects.

**From 2028,
more post-secondary options
will be available.**

Overview of Post-Secondary Pathways

Students taking at least	POST-SEC PATHWAYS					
	ITE Year 1 Entry	ITE Year 2 Entry	Polytechnic Foundation Programme (PFP)	Polytechnic Year 1	Millennia Institute	Junior College
6 G3 subjects	✓	✓	NEW ✓	✓	✓	✓
5 G3 subjects	✓	✓	NEW ✓	✓	✓	
4 G3 + 1 G2 subjects	✓	✓	NEW ✓	NEW ✓		
5 G2 subjects	✓	✓	✓			
4 G1 subjects	✓	NEW* ✓				

*For students who meet ITE's Year 1 academic requirements



© Ministry of Education, Singapore. All Rights Reserved.

Case Study 1:

Student in PG1 – taking up subjects at MDL to increase post-secondary options



SUSAN

Examinable Subjects offered in S2				S2 PERFORMANCE	INTERESTS	ASPIRATIONS
EL	G2	HUM	G1	<ul style="list-style-type: none"> Met academic requirement Eligible to offer HUM and D&T at G2 Did relatively well in G1 MTL, but just missed the eligibility to offer MTL at MDL (i.e., G2) based on common reference of 75% Failed SCI 	<ul style="list-style-type: none"> Has a small collection of model kits Loves watching historical films 	<ul style="list-style-type: none"> 'I don't know what I want' Uncertain about post-secondary options
MA	G2	ART	CMN			
MTL	G1	D&T	CMN			
SCI	G1	FCE	CMN			

Considerations

1. As Susan had offered EL and MA at MDL at an earlier juncture, and is eligible to offer HUM at MDL at the end of S2 (i.e., total of **3** subjects), the school may exercise professional judgement to allow her to offer **additional subject(s) at MDL¹** if:

- it opens up access to additional post-secondary options
- she is deemed able to cope with additional subject(s) at MDL

Possible Subject Combinations at S3

Offering only eligible subjects at G2

EL	G2
MA	G2
MTL	G1
SCI	G1
HUM (SS, HIST)	G2
D&T	G2

Offering additional subject(s) at G2

EL	G2
MA	G2
MTL	G2
SCI	G1
HUM (SS, HIST)	G2
D&T	G2

Post-secondary Options

- | | |
|--------------------------|---------------------------------|
| 1. Higher Nitec (3-year) | 1. Higher Nitec (3-year) |
| | 2. Higher Nitec (2-year) |
| | 3. PFP |

¹ Refer to Full SBB Handbook, Section C.2, for detailed criteria to offer additional subjects at MDL. This is not applicable to students who did **not** meet academic requirements and are to calibrate their academic load. For S2 students offering G1 subjects, bridging from S2 G1 subjects to S3 G2 subjects is limited to 2 subjects.

Case Study 2:

Student in PG2 – did not meet academic requirement, so to re-calibrate load in S3



JAKE

Examinable Subjects offered in S2				S2 PERFORMANCE	INTERESTS	ASPIRATIONS
EL	G2	HIST	G2	<ul style="list-style-type: none"> • Did not meet academic requirement: obtained less than 50% for the following subjects EL, SCI, MTL, HIST, LIT, • FCE Eligible to offer Art at G3 	<ul style="list-style-type: none"> • Enjoys Art lessons, especially sketching classes • Enjoys learning about physical landforms in Geography lessons 	<ul style="list-style-type: none"> • Aspires to pursue design courses
MA	G2	LIT	G2			
MTL	G2	ART	CMN			
SCI	G2	D&T	CMN			
GEOG	G2	FCE	CMN			

Considerations
<ol style="list-style-type: none"> 1. As Jake has not met the academic requirement to progress to the next year of learning, he must calibrate his academic load at S3. 2. In deciding amongst the 3 options, schools should exercise their professional judgement on the most appropriate option (considering post-secondary options) for the student, in conversation with student and his parents. 3. Schools could utilise a combination of the following options to calibrate the students' curricular load.

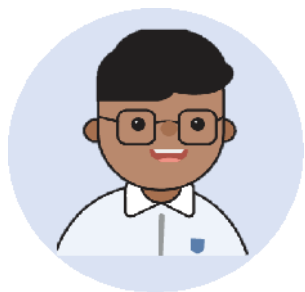
Possible Calibration at S3 (a typical subject load in Jake's school is 7 subjects)			
OPTION 1:		OPTION 2:	
REDUCING NUMBER OF SUBJ ¹ AND/OR ELECTIVE SUBJ AT LDL		OFFERING COMPULSORY SUBJ(S) AT LDL ²	
EL	G2	EL	G1/2
MA	G2	MA	G2
MTL	G2	MTL	G1/2
SCI (CHEM,BIO)	G2	SCI	G1/2
HUM (SS,GEOG)	G2	HUM	G2
ART	G1/G2/G3	ART	G2
Post-secondary Options			
<ol style="list-style-type: none"> 1. Higher Nitec (3-year) 2. Higher Nitec (2-year) 3. PFP 		<ol style="list-style-type: none"> 1. Higher Nitec (3-year)³ 	

¹ A student should offer a minimum of 5 examinable subjects.

² As doing so is likely to impact post-secondary articulation, the school should discuss which compulsory subject(s) the student should offer at LDL with the student and his/her parents, based on his/her post-secondary aspirations and other holistic considerations. The school should refer to Full SBB Handbook, Section C.2 for in-school progression guidelines on how students may offer compulsory subjects at LDL.

³ If only 1 compulsory subject (other than EL) is offered at LDL, this student would still be eligible for Higher Nitec (2-year) and PFP by offering EL, MA and 3 other subjects at G2.

Case Study 3: Student in PG3 – considering what subjects based on interests for post-secondary



IRFAN

Examinable Subjects offered in S2				S2 PERFORMANCE	INTERESTS	ASPIRATIONS
EL	G3	HIST	G3	<ul style="list-style-type: none"> Met academic requirement Scored above 75% for EL, SCI and LIT 	<ul style="list-style-type: none"> Intends to invest more time to pursue non-academic interests (i.e. he will be serving on the EXCO of the Student Council) and expressed desire to explore sizing his curricular load (e.g., offering an elective at G2) Has enjoyed Literature, History and Mathematics lessons and is considering which related subjects to offer at US while weighing his overall curricular load 	<ul style="list-style-type: none"> Aspires to go to JC/MI to offer mainly Humanities and Arts subjects or to study Business or Psychology in a Polytechnic
MA	G3	LIT	G3			
MTL	G3	ART	CMN			
SCI	G3	D&T	CMN			
GEO	G3	FCE	CMN			

Considerations

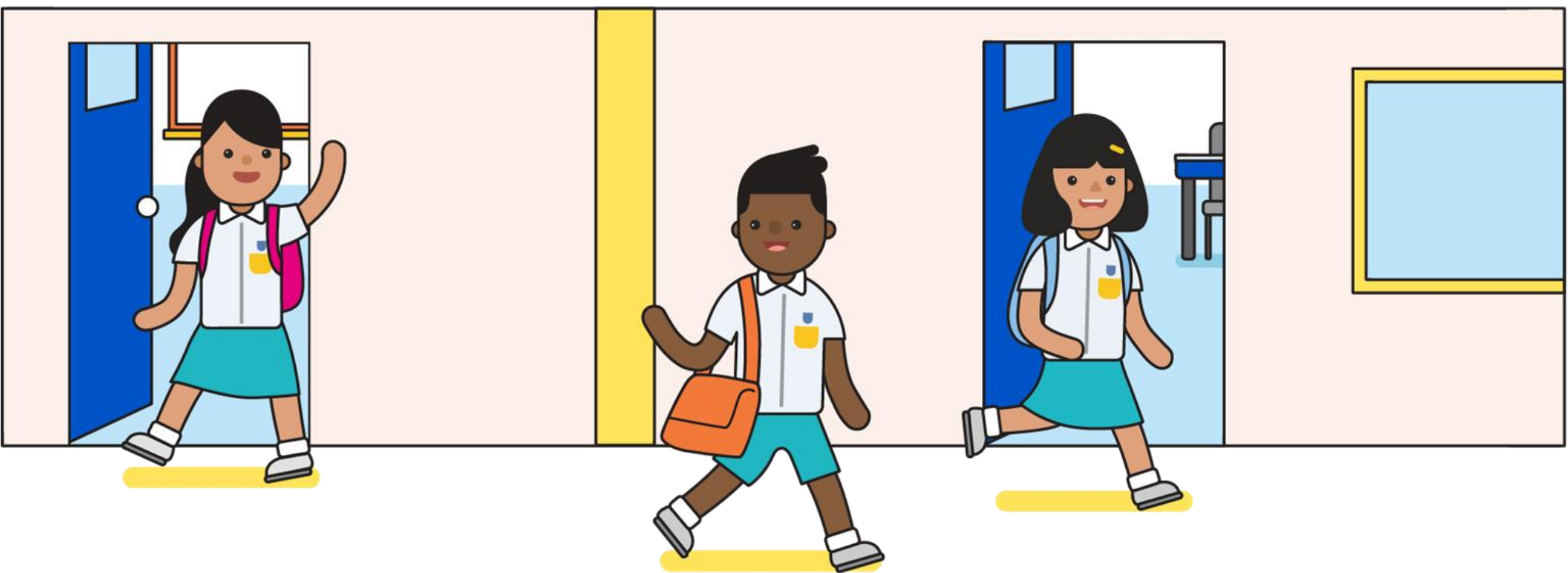
- Under the Full SBB landscape, students have greater agency to **size their curricular load according to their strengths, interests and aspirations** (subject to school's resourcing context).
- As Irfan had expressed interest in sizing his curricular load, school could guide him to consider the following ways to do so while balancing his interests, strengths and eligibility for post-secondary articulation:
 - Offering fewer elective subjects (i.e., 7 subject combination)
 - Offering an elective subject at G2 with an 8-subject combination
 - Allowing Irfan to start off with an 8-subject combination with all subjects at G3, but assuring him that he can re-size his curricular load subsequently.

Possible Subject Combinations at S3

	Offering 7-subject combination		Offering 8-subject combination	
Compulsory Subjects	EL	G3	EL	G3
	MA	G3	MA	G3
	MTL	G3	MTL	G3
	CHEM	G3	CHEM	G3
	HUM (SS, HIST)	G3	HUM (SS, HIST)	G3
Elective Subjects	CHOOSE 2 OF THE FOLLOWING ELECTIVES		CHOOSE 3 OF THE FOLLOWING ELECTIVES	
	1. G3 PHY	3. G3 LIT	1. G3 PHY	3. G2/G3 LIT
	2. G3 BIO	4. G3 A MATH	2. G3 BIO	4. G2/G3 A MATH

Post-secondary Options

- Higher Nitec (3-year)
- Higher Nitec (2-year)
- PFP
- Poly Year 1
- JC/MI



Supporting your child through their
Secondary School Journey

How can you support your child?

- Learn more about their strengths, skills, interests, learning styles and aspirations.
- Encourage your child to be open and think about possible education and career opportunities.
 - There are many post-secondary education options for students to explore. Find one that best suit their strengths, skills, interests and learning styles.

How can you support your child?

Support

Affirm

Familiarise

Empathise

How can you support your child?

- Here's how you can journey with your child:
 - **Connect with them**
 - Set aside time to listen and understand how they are coping with school and CCA, their thoughts and feelings.
 - Create opportunities outside of school that would help you and your child recognise their interests, skills, strengths and learning styles.
 - **Support them to learn for life**
 - Stay open to the possible education and career pathways that are available and be flexible in discussing these pathways with them.
 - Trust their abilities to grow to become better versions of themselves, while being careful not to project your expectations on them.
 - Encourage them to take ownership of their goals and plans.

Resources

Video – Heart to Heart Talk

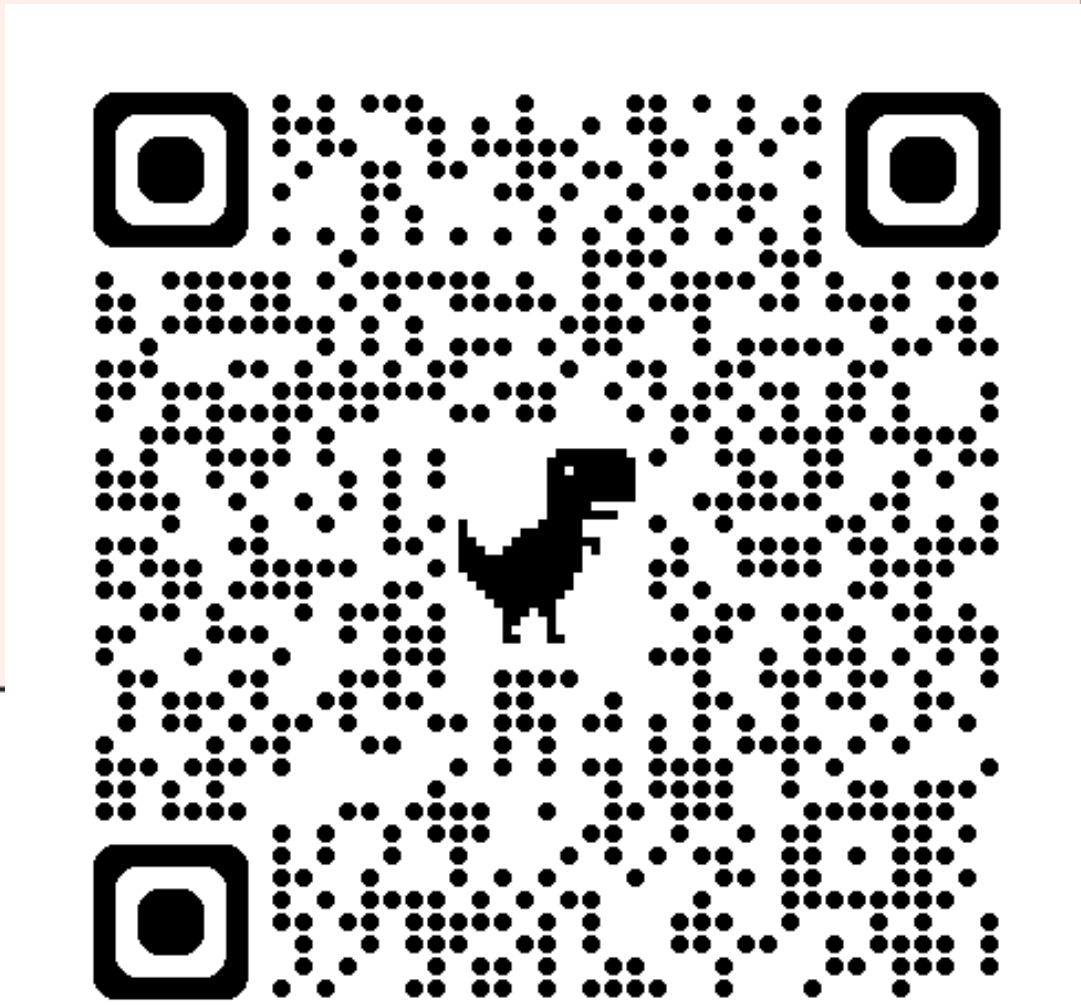
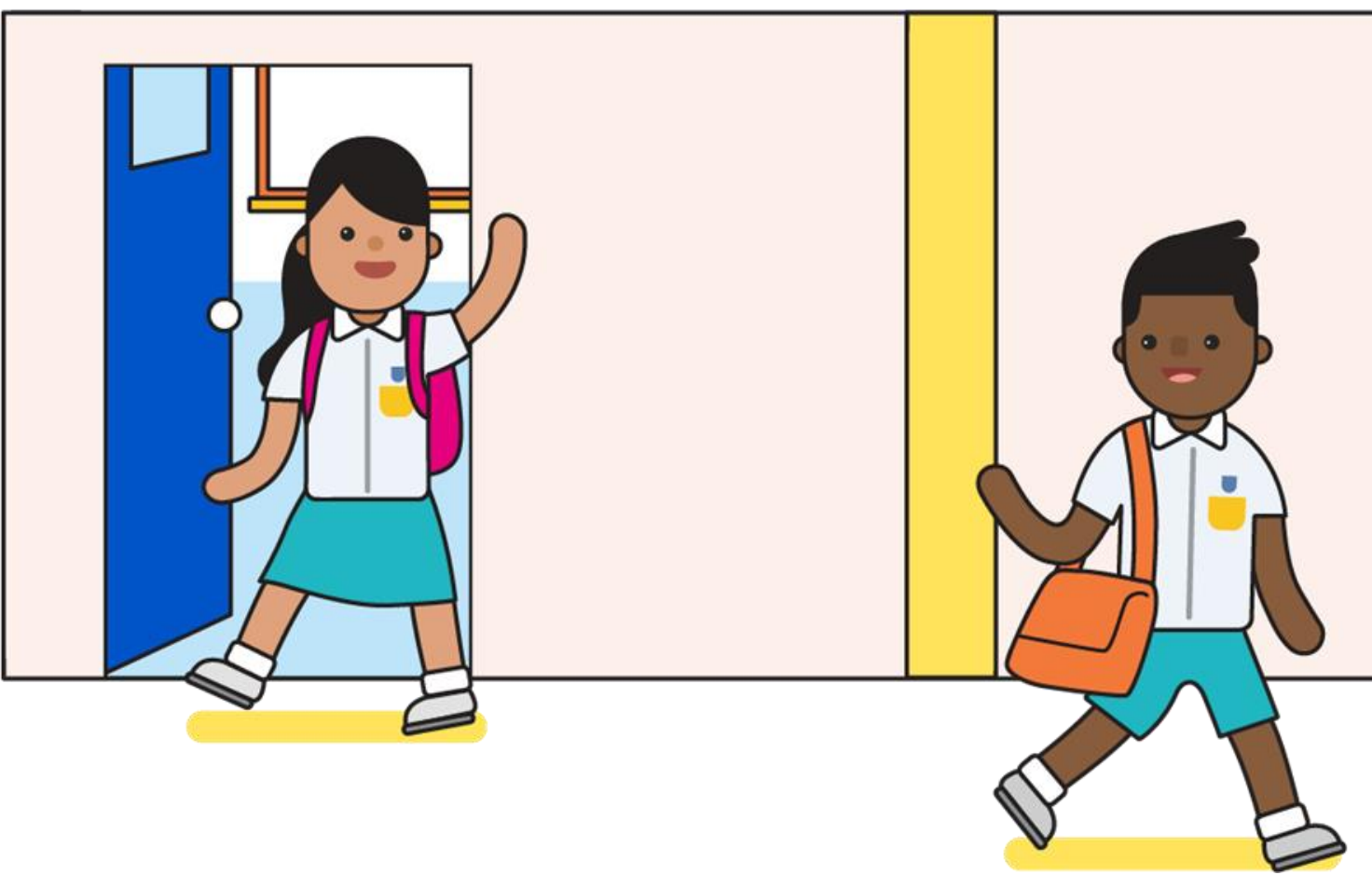


<https://go.gov.sg/h2htep2>

ECCG Tips for Parents



<https://go.gov.sg/tips-for-parents>



Thank you

Please scan the QR to pose/ask your questions.

We will consolidate the questions and will send out the responses after the engagement session.

Visit the Full SBB Microsite

<https://go.gov.sg/moe-fsbb>



What is Full SBB?

Full SBB is part of MOE's ongoing efforts to nurture the joy of learning and develop multiple pathways to cater to the different strengths and interests of our students.



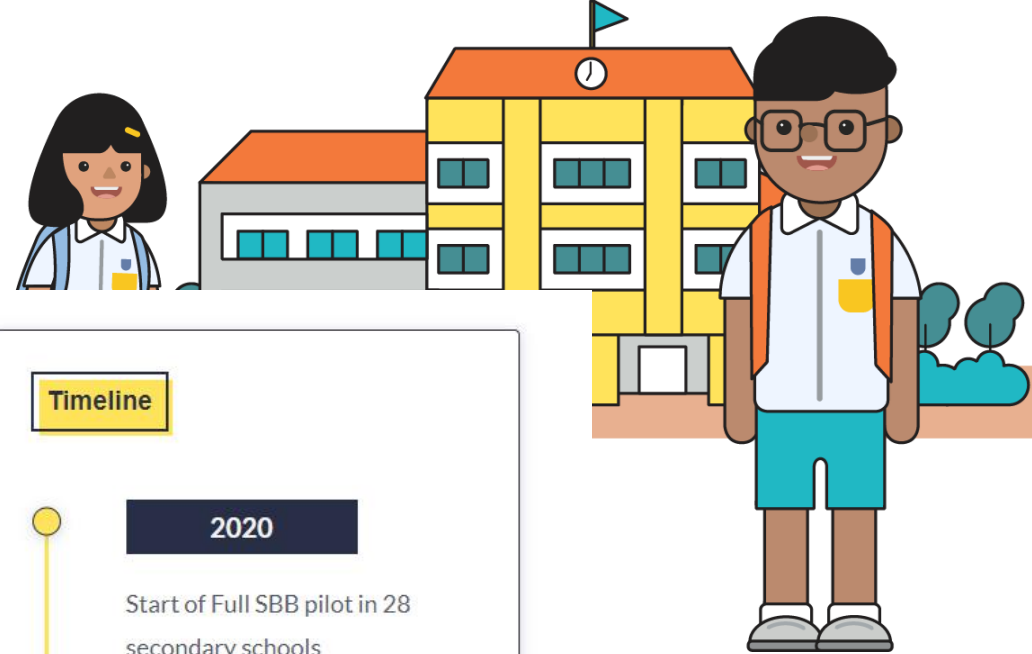
Secondary school experience under Full SBB

Find out more about Secondary 1 postings, form classes, subject offerings, Common Curriculum and other changes under Full SBB.



FAQ

Read this list of commonly asked questions and answers on Full SBB.



Timeline

2020

Start of Full SBB pilot in 28 secondary schools

2021

First cohort of Primary 6 students undergo new PSLE scoring and Secondary 1 (S1) posting system

2022-2024

Progressive roll-out of Full SBB to more secondary schools

2027

Find out more about Full SBB

Microsite



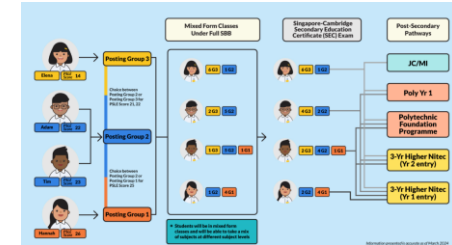
<https://go.gov.sg/moe-fsbb>

Interactive Site (updated Mar 2024)



<https://go.gov.sg/my-fsbb-path>

Infographic (updated Mar 2024)



<https://go.gov.sg/fsbb-pathways>

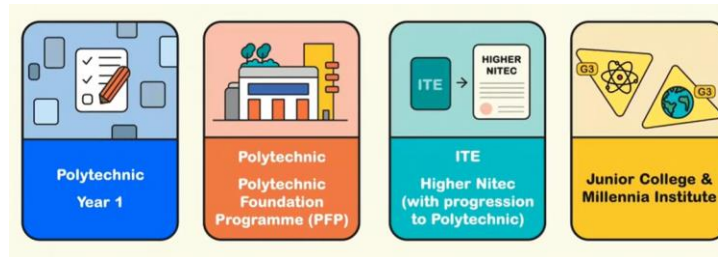
Find out more about Full SBB

MOE Explainer Video: Full SBB



<https://go.gov.sg/moe-fsbb-explainer>

MOE Explainer Video: Post-Secondary Pathways under Full SBB



<https://go.gov.sg/moe-fsbb-postsec>

CNA Documentary: Full SBB: A New School of Thought



<https://go.gov.sg/anewschoooloftthought>